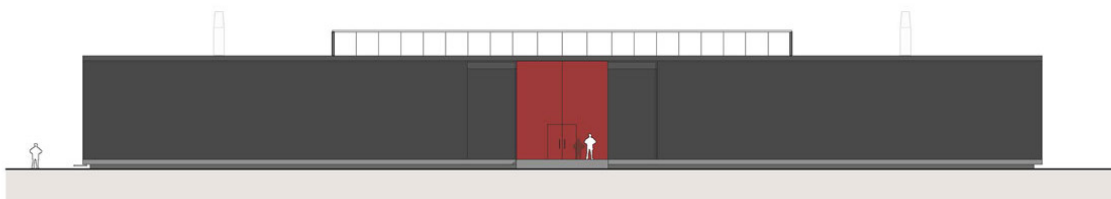


wind tunnel eindhoven university of technology



project description

wind tunnel eindhoven university

client

eindhoven university of technology

year

2015 - 2017

project team

prof.dipl.-ing. christian rapp

ir. ruurd roorda

ir. gijs adriaansens

ir. bram van kaathoven

With the design of a new wind tunnel facility for the faculty of the Built Environment, Eindhoven University of Technology takes the next step in the realization of its ambitions, clearly pronounced and translated in the Masterplan TU/e Science Park (as developed by Bauhütte). The design builds on the core principles of OD205 (the office of campus architect Van Embden who formulated the original urban plan of the campus)

and therefore fits seamlessly in the urban and architectural repertoire of the campus. The steel loadbearing construction, together with the facade of black masonry and the red supporting colour, make the building part of the same 'architectonic family' as the other buildings within the campus repertoire. Apart from the wind tunnel, the building also facilitates additional functions such as the server room of the university.